

THORGEON

SENSORS



PHOTOELECTRIC SMOKE ALARM 02015

 dB
≥85/3m

 1×9V

 IP 20

 INDOOR

 TEST

 10
YEAR

 -10 °C

 +50 °C

 Low battery
indication

PHOTOELECTRIC SMOKE ALARM

MODEL No: 02015

This alarm is a smoke detector of the photo cell principle. This means that the alarm checks the air for smoke resulting from fire. It does not detect heat, gas or fire. If the smoke detector is properly mounted and maintained it will sound an alarm in an early stage. In the event of a fire this can give you those extra seconds needed to vacate your home and call the fire brigade. The alarm is designed to detect smoke. It cannot prevent a fire. Read the instructions through carefully before using the smoke detector.

MOUNTING:

Where is the best place to place the smoke detectors?

- * at least 1 in each room
- * one on each floor
- * in the hallway, in the stairway,
- * in front of each bedroom door
- * in each bedroom (if you sleep with the door shut)
- * in the living room
- * in the storage room or spaces with electric equipment



ISO9001

BS EN 14604 : 2005

TECHNICAL PARAMETERS

ALARM:	≥85/3M
DETECTION RANGE:	360°
DETECTION DISTANCE:	20M MAX(<24°C)
BATTERY:	1X 9V DC BATTERY
IP RATING:	IP20
WORKING TEMPERATURE:	+4°~+40°C
WARRANTY:	10 YEARS

INSTALLATION:

Recommended placing for the Smoke Alarm:

1 smoke detector on each floor.

Empfohlene Platzierung:

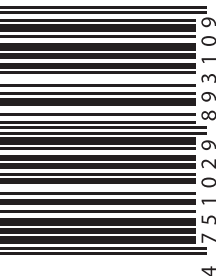
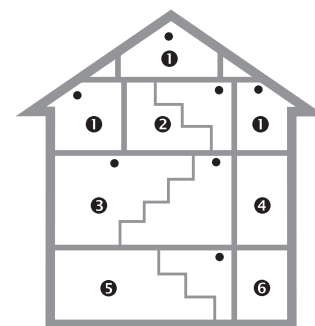
je 1 Rauchmelder auf jeder Etage

Ieteicamais izvietojums:

pa 1 dūmu detektoram katrā stāvā

Рекомендованная установка:

по 1 детектору на каждый этаж



THORGEON



www.thorgeon.com

SIA "ATTA-1", Jurkalnes street 1, Rīga, Latvia, LV-1046

Manufactured in PRC

